

# Downer

Relationships creating success



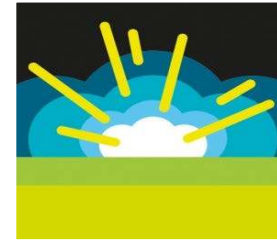
**Infrastructure Services**



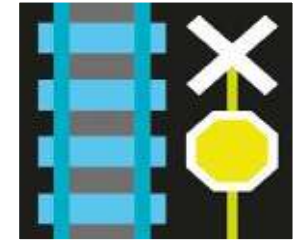
**New Zealand**



**Engineering,  
Construction &  
Maintenance  
(EC&M)**



**Mining**



**Rail**



**Coal Quality  
Coal Handling  
Coal Prepration**



**Fine Mineral  
Beneficiation  
(Mineral Sands,  
Iron Sands, Iron  
Ore, Chrome...)**

**Leader in  
Coal Quality  
and CHPP**



- **Started as Quality Coal Consulting in 1987**
- **QCC became part of Downer EDi in 2004**

# Core Capabilities

**Coal Quality**

- Technical/Engineering consultancy as market entry platform
- Core business IP – our customers trusted advisers
- Low value spend for customers for high value returns

**Coal Processing**

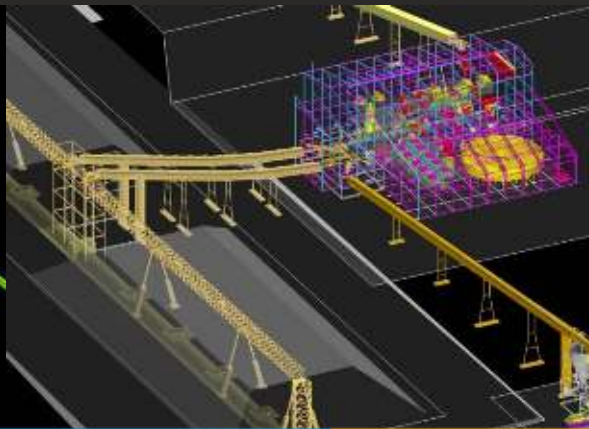
**Engineering Services  
(Civil/Structural/Mechanical/  
Electrical/Drafting)**

Technical specialists – essential to complete customer's study/project delivery

**Project Delivery/Management**

Core project delivery capability to complete customers 'total' project delivery requirements for small projects

**Downer Group – Construction  
Operating & Maintenance Contracts**



- **Resource assessment (reserves, quality, in situ moisture, RD and potential upgrade through preparation)**
- **Algorithms for practical preparation outcomes from detailed mine planning**
- **Revenue/product optimisation from reserve to loadout**
- **Product specification and technical marketing factors**
- **Engineering, costing and layouts for coal handling and preparation plants**



- **An established provider of CHPP design and construction services**
- **CHPP projects are executed through a range of contractual arrangements to suit Client requirements**
  - **Alliance**
  - **EPCM**
  - **EPC**
  - **Design**

## Recent Coal Projects



- Ravensworth North (Xstrata Coal) – EPC 3000 t/h CHPP
- Curragh Expansion (Wesfarmers) – EPC 1200 t/h module
- Mangoola (Xstrata Coal) - Alliance 1800 t/h two product CHPP
- Drayton CTU Upgrade (Anglo) – EPCM 700 t/h CHPP
- Stockton (Solid Energy NZ,), Design 250t/h CHPP



*Thank-you*